

POWER PROFILE #4

INCHCAPE 20



Owner

Inchcape Shipping
Dubai, UAE

Builder

Grandweld
Dubai, UAE

Cummins Contact

Alaa El-Din Mahmoud Aly Hassan
Cummins Middle East
alaa.eldin@cummins.com

VESSEL SPECIFICATIONS

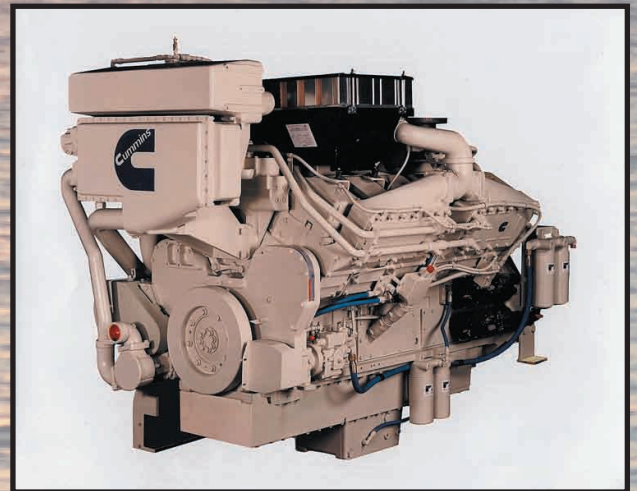
Application: Crew Boat
Length: 33.5 m
Beam: 6.7 m
Main Engines: 3x KTA38-M2
Propulsion System: Fixed Pitch Propeller
New Build
Class: BV
Performance:
Maximum speed: 27 knots
Cruising speed: 15 knots

ENGINE SPECIFICATIONS

KTA38-M2

Power: 1044 kW (1400 HP) @ 1950 RPM
Rating: Medium Continuous Duty
Configuration: V-12 cylinder, 4 stroke
Fuel Consumption*: 179.0 L/hr (47.0 gal/hr)

* ISO 8178 E3 cycle



WHY CUMMINS?

Reliable and Durable Products
Excellent Customer Support
Best in Class Life Cycle Cost

EVERY™
PORT.



Cummins Inc.
4500 Leeds Avenue - Suite 301
Charleston, SC 29405
U.S.A.

E-mail: wavemaster@cummins.com
Internet: <http://marine.cummins.com>

Bulletin M10075 4/06
©2006 Cummins Inc.